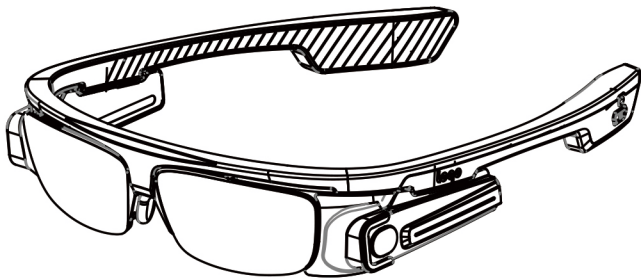


GREENJOY MOISTURIZING GLASSES USER MAMUAL



Package Contains :

Moisturizing

Glasses Frame ×1

Spray nozzle ×2

Charging cable ×1

Packing Box ×1

User manual ×1

Qualification ×1

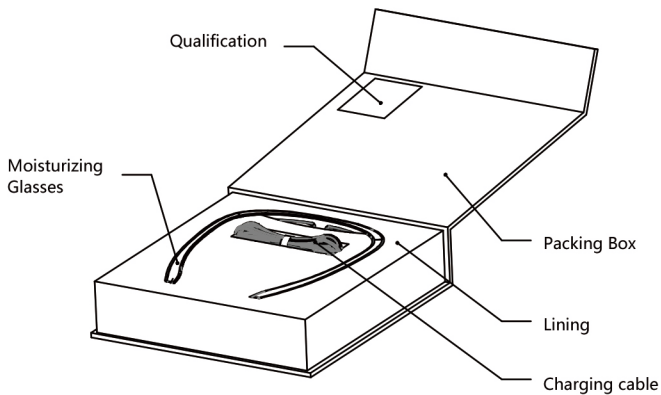
Lining ×1

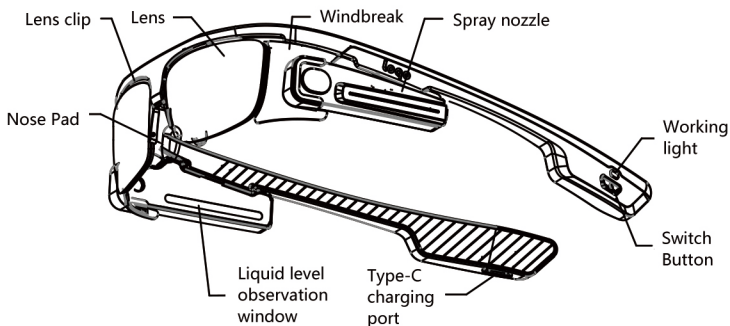
Please read user manual meticulously before using the glasses and keep this manual in case.

1PARAMETERS OF GLASSES

MODEI NUMBER	LOQO-1
INPUT VOLTAGE	5V
AVERAGE POWER	1W
BATTERY CAPACITY	120MA

2PARTS NAME





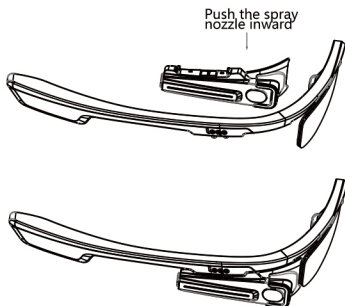
3 METHOD OF APPLICATION

•3.1

Take out moisturizing glasses from box

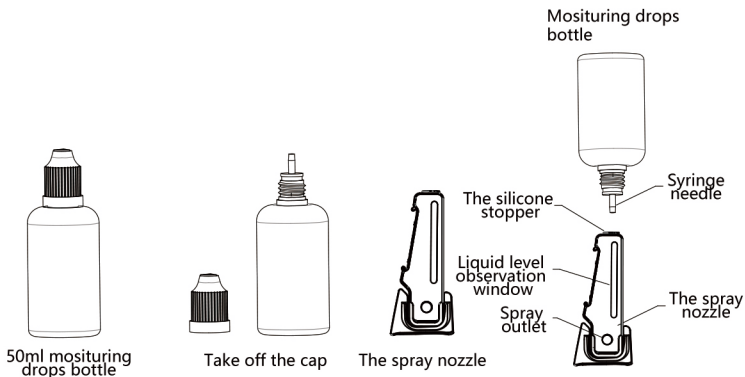
•3.2

Take off spray nozzle: Push spray nozzle inward



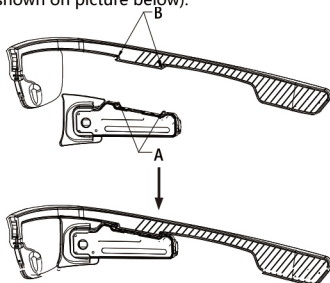
•3.3

Filling the spray nozzle: Take out 50ml moisturizing drops bottle from another package. Take off the cap of bottle, open the silicone stopper of spray nozzle (as shown on picture below). Pay attention to the liquid level window while filling the spray nozzle, stop filling the drops when the nozzle's tank is full. Then plug the silicone stopper back in the nozzle and filling is done.



• 3. 4

Installing the spray nozzle: Align point A of spray nozzle with point B of frame, press the nozzle to frame (as shown on picture below).



• 3. 5

Start and Stop: Long press the switch button for 2 seconds to start the glasses, working blue light remains on. Long press the switch button for 2 seconds again to stop the glasses, working blue light off.

• 3. 6

Modes for choosing: The glasses default to mode A when power on, short press the switch button to enter mode B, and short press to switch the modes as needed.

Mode A: Atomized particles generate from both sides of the glasses every 5 seconds and stop automatically after 30 minutes' working.

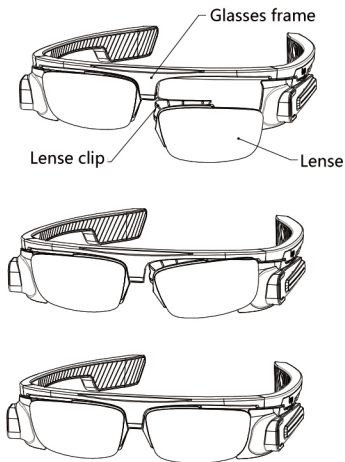
Mode B: Atomized particles generate continuously but alternately from one side of the glass (spraying for 5 seconds from one side) for 3 minutes, then glasses switch to mode A automatically. After 3 minutes' working in mode A, the glasses switch to spray continuously but alternately from one side as start. The glasses working in circles like this and stop automatically after 30 minutes' working.

• 3. 7

Charging: The blue working light flashes to remind the battery is low while glasses working. Charging with the Type-C charging cable. The blue working light remains on when charging, but goes off when fully charged.

• 3. 8

Replace the lenses: As shown below, press the front of the lens frame down first. Then push the front of the lens frame laterally to make the frame slides out of the front slot of the glasses frame. When installing the lens, first insert the rear slot of the frame into the back slot of the glasses frame, and then push upwards to snap the front part of the lenses frame into the front slot of the glasses frame.



• 3. 9

The silicone stopper of spray nozzle (position shown as below picture) can't be opened, or drops in nozzle will be polluted.



DON'T DISMANTLE

• 3. 10

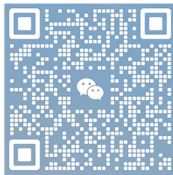
Adjust the nose pad: The nose pad can be adjusted according wearers' face feature to make sure the spray can reach eyes' surface.

4 COMMON FAULTS

Faults	Situation	Reason	Solution
Abnormal spray	Small amount of spray	Liquid drops accumulate at the spray outlet	Wipe clean the spray outlet with paper towels or cotton swabs
Abnormal spray	Blue working light on, but spray abnormally or just can't spray	Liquid drops accumulate at the spray outlet	Wipe clean the spray outlet with paper towels or cotton swabs
Can't power up	Blue working light doesn't light. even long press the switch button for 2 seconds	Run out of battery	Charging the glasses
Can't spray	Blue working light on but no spray	Run out of liquid moisturizing drops	Filling liquid moisturizing drops
Can't charge	Blue working light doesn't light even linked the charging cable	Charging is finished or charging cable is damaged	Confirm if the glasses are working properly or replace the charging cable

5 NOTES

- 1) Don't start moisturizing glasses while charging.
- 2) keep the spray outlet clean, wipe clean the outlet with paper towels or cotton swabs after using.
- 3) After filling liquid drops, wipe clean the spray outlet.
- 4) Don't use under wet conditions.
- 5) Do not use it in face of strong wind, as the spray will be disturbed.
- 6) Avoid falling from high places.
- 7) Please use up the liquid drops in the nozzle if it is not used for a long period time.
- 8) Use up or release the redundant liquid drops in the spray nozzle after using the glasses everytime for the moisturizing drops may volatilize and crystallize, which may block the spray outlet.
- 9) Ensure the windbreak is installed while using the glasses.



Scan and know about us on Wechat