

# TEST REPORT



Report No.: A2104287-C01-R06

Date: September 08, 2021

Page 1 of 18

**Applicant:** Ningbo Bestgym Fitness Equipment Co., Ltd.  
**Address:** Wangdong Road NO.13 , Shangtian Town, Fenghua, Ningbo, Zhejiang, China

The following sample(s) and sample information was/were submitted and identified by/on the behalf of the client:

Sample Name	FITNESS BIKE
Model No.	BGB118
Reference Information	BGB118M
Manufacturer	Ningbo Bestgym Fitness Equipment Co., Ltd.
Sample Received Date	August 02, 2021
Testing Period	August 03 – September 06, 2021
Test Method & Test Result	Please refer to following pages.

## Test Requested

As specified by client, according to RoHS Directive 2011/65/EU with amendment (EU) 2015/863, to test Lead (Pb), Cadmium (Cd), Mercury (Hg), Hexavalent Chromium(Cr(VI)), Polybrominated Biphenyls(PBBs), Polybrominated Diphenyl Ethers(PBDEs), Phthalates(DBP, BBP, DEHP, DIBP) in the tested materials of the submitted sample(s).

## Result

Pass

Tested by:

*Anne Zhao*

Approved by:

*[Signature]*



Reviewed by:

*Tony Gmy*

Date of issue: September 08, 2021



# TEST REPORT

Report No.: A2104287-C01-R06

Date: September 08, 2021

Page 2 of 18

## Test Method

(1) XRF screening limits for regulated elements according to IEC 62321-3-1:2013 (Unit: mg/kg)

Element	Polymers	Metals	Composite material
Pb	$BL \leq (700-3\sigma) < X$ $< (1300+3\sigma) \leq OL$	$BL \leq (700-3\sigma) < X$ $< (1300+3\sigma) \leq OL$	$BL \leq (500-3\sigma) < X$ $< (1500+3\sigma) \leq OL$
Cd	$BL \leq (70-3\sigma) < X$ $< (130+3\sigma) \leq OL$	$BL \leq (70-3\sigma) < X$ $< (130+3\sigma) \leq OL$	$LOD < X < (150+3\sigma) \leq OL$
Hg	$BL \leq (700-3\sigma) < X$ $< (1300+3\sigma) \leq OL$	$BL \leq (700-3\sigma) < X$ $< (1300+3\sigma) \leq OL$	$BL \leq (500-3\sigma) < X$ $< (1500+3\sigma) \leq OL$
Cr	$BL \leq (700-3\sigma) < X$	$BL \leq (700-3\sigma) < X$	$BL \leq (500-3\sigma) < X$
Br	$BL \leq (300-3\sigma) < X$	N/A	$BL \leq (250-3\sigma) < X$

(2) Chemical screening limits for PBBs, PBDEs

Test Item(s)	Screening limits(Unit: mg/kg)
Polybrominated Biphenyls (PBBs)	$BL^* \leq 200 < IN$
Polybrominated Diphenyl Ethers (PBDEs)	$BL^* \leq 200 < IN$

(3) Chemical screening limits for Phthalates

Test Item(s)	Screening limits(Unit: mg/kg)
Dibutyl phthalate(DBP)	$BL \leq 600 < IN$
Benzylbutyl phthalate(BBP)	$BL \leq 600 < IN$
Di-2-ethylhexyl phthalate(DEHP)	$BL \leq 600 < IN$
Diisobutyl phthalate(DIBP)	$BL \leq 600 < IN$

(4) Chemical Test

Test Item	Test Method	Test Instrument	MDL (mg/kg)	EU RoHS Limit (mg/kg)
Lead (Pb)	IEC 62321-5:2013	ICP-OES	2	1000
Cadmium (Cd)	IEC 62321-5:2013	ICP-OES	2	100
Mercury (Hg)	IEC 62321-4:2013 +AMD1:2017	ICP-OES	2	1000
Hexavalent Chromium (Cr(VI))	IEC 62321-7-2:2017 (non-metal)	UV-Vis	8	1000
	IEC 62321-7-1:2015 (metal)	UV-Vis	0.1( $\mu\text{g}/\text{cm}^2$ )	1000
Polybrominated Biphenyls (PBBs)	IEC 62321-6:2015	GC-MS	5	1000
Polybrominated Diphenyl Ethers (PBDEs)	IEC 62321-6:2015	GC-MS	5	1000
Phthalates(DBP, BBP, DEHP, DIBP)	IEC 62321-8:2017	GC-MS	50	1000

Shenzhen Alpha Product Testing Co., Ltd.

Building i, No.2, Lixin Road, Fuyong Street, Bao'an District, 518103, Shenzhen, Guangdong, China

# TEST REPORT



Report No.: A2104287-C01-R06

Date: September 08, 2021

Page 3 of 18

## Tested Material Description

No.	Description	No.	Description
1	Black soft leather edging of seat cushion	26	Black metal adjusting screw of handle
2	Black soft leather of cushion	27	Transparent plastic patch for display shell
3	Beige sponge cushion of cushion soft	28	Black plastic case of display
4	Light gray plastic edging of cushion	29	Polarizing film for display screen
5	Black metal plate of seat cushion	30	Transparent glass substrate for display
6	Silvery metal nut of cushion	31	Pink conductive tape of display screen
7	Black coating of cushion bracket	32	White diffusion film of display backlight
8	Silvery metal substrate of cushion bracket	33	Translucent light guide plate of display backlight
9	Black plastic cover of cushion bracket square tube	34	White reflective film of display backlight
10	Black plastic knob of cushion bracket	35	Red thin wire sheath of display backlight connection wire
11	Black plastic knob of adjusting rod adjustment screw	36	Black thin wire sheath of display backlight connection wire
12	Blue zinc plated metal adjusting screw of adjusting rod	37	White plastic terminal of connecting wire
13	Black coating of cushion adjustment rod	38	Chip capacitor
14	Silvery metal substrate of cushion adjustment lever	39	Chip resistor
15	Black plastic cover of seat adjustment rod	40	Black sealant of chip
16	Black plastic cover of handle tube	41	IC
17	Black foam sleeve of handle tube	42	Soldering tin on PCB board of display
18	Silvery metal handle tube	43	Green PCB board of display
19	Silvery metal induction block of handle tube	44	Black plastic button
20	Black plastic block of handle tube	45	Black plastic seat of button
21	Translucent rubber sheath for induction block connecting wire terminal	46	Soldering tin on PCB board of button
22	Black thin wire sheath of induction block connecting wire	47	Green PCB board of button
23	Black plastic terminal of induction block connecting wire	48	Red thin wire sheath of PCB board connecting wire
24	Black plastic cover for handle pressing part	49	Black plastic block of PCB board connection header
25	Black plastic handle of handle adjustment screw	50	Black plastic sleeve for electrolytic capacitor

Shenzhen Alpha Product Testing Co., Ltd.

Building i, No.2, Lixin Road, Fuyong Street, Bao'an District, 518103, Shenzhen, Guangdong, China

# TEST REPORT



Report No.: A2104287-C01-R06

Date: September 08, 2021

Page 4 of 18

## Tested Material Description

No.	Description	No.	Description
51	Silvery aluminum case of electrolytic capacitor	76	Black metal shaft of foot pedal
52	Black sealing rubber pad for electrolytic capacitor	77	Black plastic cover for pedal connecting rod
53	Electrolytic capacitor aluminum foil	78	Black metal connecting rod of pedal
54	Electrolytic capacitor separator	79	Black plastic shell cover of support frame
55	Chip capacitor	80	Orange plastic block of the support frame shell cover
56	Chip diode	81	Black rubber ring for bearing frame shell cover
57	Crystal diode	82	Silvery metal fastening nut of DC seat
58	Chip resistor	83	Black plastic seat of DC seat
59	Chip transistor	84	Red thin wire sheath of DC seat connecting wire
60	SS8550 Transistor	85	Brown thin wire sheath of DC seat connecting wire
61	IC	86	Black thin wire sheath of DC seat connecting wire
62	IC	87	Black plastic wheel of brake governor
63	Soldering tin on main PCB board	88	Black plastic shell of brake governor
64	Green main PCB board	89	White plastic gear of brake governor
65	White thin wire sheath of connecting wire	90	Off-white plastic gear of brake governor
66	Black plastic terminal for connecting wire	91	Silvery metal shaft of brake governor gear
67	Black coating of handle holder tube	92	Silvery metal handle of potentiometer
68	Silvery metal substrate of handle holder tube	93	White plastic block of potentiometer
69	Bracket tube black plastic cover	94	Silvery-gray metal cover of potentiometer
70	Black plastic cover of foot pedal	95	Potentiometer resistance carbon diaphragm
71	Grey metal counterweight steel bar of footboard	96	Potentiometer solder point
72	Black adjustment tape of foot pedal	97	White thin wire sheath of brake governor connection wire
73	Black plastic pedals	98	Black plastic terminal for connecting cable
74	Grey metal fastening nut for pedal shaft	99	Silvery wire core of connecting wire
75	Silvery metal steel ball of foot pedal shaft	100	Blue zinc-plated metal lock nut for brake cable

Shenzhen Alpha Product Testing Co., Ltd.

Building i, No.2, Lixin Road, Fuyong Street, Bao'an District, 518103, Shenzhen, Guangdong, China

# TEST REPORT



Report No.: A2104287-C01-R06

Date: September 08, 2021

Page 5 of 18

## Tested Material Description

No.	Description	No.	Description
101	Blue zinc-plated metal adjusting screw tube of brake cable	126	Silvery metal hexagon socket screw
102	Black rubber sleeve of brake cable protective sleeve	127	Black metal screw
103	Silvery metal spiral sleeve of brake cable protective sleeve	128	Ferrous metal gasket
104	Silvery metal wire rope of brake wire	129	Black metal hexagon socket screw
105	Silvery-gray metal head of brake wire rope	130	Black label glue sticker of adapter shell
106	Silvery metal tension spring of brake	131	Black plastic case of adapter
107	Gray-black magnet block of brake	132	Black plastic pins of shell plug
108	Black plastic pulley	133	Silvery metal plug pin of shell
109	Black rubber drive belt of pulley	134	Adapter plug pin solder point
110	Silvery metal plate of support frame	135	Red thin wire sheath of transformer connecting wire
111	Silvery metal tension spring of support frame	136	Silvery silicon steel sheet of transformer
112	Silvery metal ring of support frame flywheel	137	White tape of transformer coil
113	Ferrous metal cast iron flywheel of support frame	138	Red tape of transformer coil
114	Black coating of support frame	139	Copper color coil of transformer
115	Silvery metal base material of support frame	140	Translucent plastic winding frame of transformer
116	Black plastic lifting feet	141	Schottky diodes
117	Black plastic lifting knob	142	Soldering tin on PCB of adapter
118	Black plastic lifting block	143	Green PCB board of adapter
119	Black plastic roller casters	144	Adapter cable black plastic tail card
120	Silvery metal roller shaft of support frame feet	145	Black thin wire sheath of adapter wire
121	Black plastic rollers support frame feet	146	Copper wire core of adapter wire
122	Blue zinc plated metal screw	147	Black plastic head of adapter cable DC terminal
123	Blue zinc plated metal screw	148	Black plastic of adapter cable DC terminal
124	Blue zinc plated metal screw	149	Silvery metal of adapter cable DC terminal
125	Blue zinc plated metal screw		

**Remark:** The tested materials were specified and confirmed by the client.

Shenzhen Alpha Product Testing Co., Ltd.

Building i, No.2, Lixin Road, Fuyong Street, Bao'an District, 518103, Shenzhen, Guangdong, China

# TEST REPORT



Report No.: A2104287-C01-R06

Date: September 08, 2021

Page 6 of 18

## Tested Result (1) Screening Result

Tested Item(s)	Screening Result									
	1#	2#	3#	4#	5	6	7	8	9	10
Lead (Pb)	BL	BL	BL	BL	BL	BL	BL	BL	BL	BL
Cadmium (Cd)	BL	BL	BL	BL	BL	BL	BL	BL	BL	BL
Mercury (Hg)	BL	BL	BL	BL	BL	BL	BL	BL	BL	BL
Total Chromium (Cr(VI))	BL	BL	BL	BL	BL	BL	BL	BL	BL	BL
Total Bromine (PBBs & PBDEs)	BL	BL	BL	BL	N/A	N/A	BL	N/A	BL	BL
Dibutyl phthalate(DBP)	BL	BL	BL	BL	N/A	N/A	BL	N/A	BL	BL
Benzylbutyl phthalate(BBP)	BL	BL	BL	BL	N/A	N/A	BL	N/A	BL	BL
Di-2-ethylhexyl phthalate(DEHP)	BL	BL	BL	BL	N/A	N/A	BL	N/A	BL	BL
Diisobutyl phthalate(DIBP)	BL	BL	BL	BL	N/A	N/A	BL	N/A	BL	BL

Tested Item(s)	Screening Result									
	11	12	13	14	15	16#	17	18	19	20
Lead (Pb)	BL	BL	BL	BL	BL	BL	BL	BL	BL	BL
Cadmium (Cd)	BL	BL	BL	BL	BL	BL	BL	BL	BL	BL
Mercury (Hg)	BL	BL	BL	BL	BL	BL	BL	BL	BL	BL
Total Chromium (Cr(VI))	BL	BL	BL	BL	BL	BL	BL	BL	X	BL
Total Bromine (PBBs & PBDEs)	BL	N/A	BL	N/A	BL	BL	BL	N/A	N/A	BL
Dibutyl phthalate(DBP)	BL	N/A	BL	N/A	BL	BL	BL	N/A	N/A	BL
Benzylbutyl phthalate(BBP)	BL	N/A	BL	N/A	BL	BL	BL	N/A	N/A	BL
Di-2-ethylhexyl phthalate(DEHP)	BL	N/A	BL	N/A	BL	BL	BL	N/A	N/A	BL
Diisobutyl phthalate(DIBP)	BL	N/A	BL	N/A	BL	BL	BL	N/A	N/A	BL

Tested Item(s)	Screening Result									
	21	22	23	24	25	26	27	28	29	30
Lead (Pb)	BL	BL	BL	BL	BL	BL	BL	BL	BL	BL
Cadmium (Cd)	BL	BL	BL	BL	BL	BL	BL	BL	BL	BL
Mercury (Hg)	BL	BL	BL	BL	BL	BL	BL	BL	BL	BL
Total Chromium (Cr(VI))	BL	BL	BL	BL	BL	BL	BL	BL	BL	BL
Total Bromine (PBBs & PBDEs)	BL	BL	BL*	BL	BL	N/A	BL	BL	BL	BL
Dibutyl phthalate(DBP)	BL	BL	BL	BL	BL	N/A	BL	BL	BL	BL
Benzylbutyl phthalate(BBP)	BL	BL	BL	BL	BL	N/A	BL	BL	BL	BL
Di-2-ethylhexyl phthalate(DEHP)	BL	BL	BL	BL	BL	N/A	BL	BL	BL	BL
Diisobutyl phthalate(DIBP)	BL	BL	BL	BL	BL	N/A	BL	BL	BL	BL

Shenzhen Alpha Product Testing Co., Ltd.

Building i, No.2, Lixin Road, Fuyong Street, Bao'an District, 518103, Shenzhen, Guangdong, China



# TEST REPORT

Report No.: A2104287-C01-R06

Date: September 08, 2021

Page 7 of 18

## (1) Screening Result

Tested Item(s)	Screening Result									
	31	32	33	34	35	36	37	38	39	40
Lead (Pb)	BL	BL	BL	BL	BL	BL	BL	BL	BL	BL
Cadmium (Cd)	BL	BL	BL	BL	BL	BL	BL	BL	BL	BL
Mercury (Hg)	BL	BL	BL	BL	BL	BL	BL	BL	BL	BL
Total Chromium (Cr(VI))	BL	BL	BL	BL	BL	BL	BL	BL	BL	BL
Total Bromine (PBBs & PBDEs)	BL	BL	BL	BL	BL	BL	BL	BL	BL	BL
Dibutyl phthalate(DBP)	BL	BL	BL	BL	BL	BL	BL	BL	BL	BL
Benzylbutyl phthalate(BBP)	BL	BL	BL	BL	BL	BL	BL	BL	BL	BL
Di-2-ethylhexyl phthalate(DEHP)	BL	BL	BL	BL	BL	BL	BL	BL	BL	BL
Diisobutyl phthalate(DIBP)	BL	BL	BL	BL	BL	BL	BL	BL	BL	BL

Tested Item(s)	Screening Result									
	41	42	43	44	45	46	47	48	49	50
Lead (Pb)	BL	BL	BL	BL	BL	BL	BL	BL	BL	BL
Cadmium (Cd)	BL	BL	BL	BL	BL	BL	BL	BL	BL	BL
Mercury (Hg)	BL	BL	BL	BL	BL	BL	BL	BL	BL	BL
Total Chromium (Cr(VI))	BL	BL	BL	BL	BL	BL	BL	BL	BL	BL
Total Bromine (PBBs & PBDEs)	BL	N/A	BL*	BL	BL	N/A	BL*	BL	BL*	BL
Dibutyl phthalate(DBP)	BL	N/A	BL	BL	BL	N/A	BL	BL	BL	BL
Benzylbutyl phthalate(BBP)	BL	N/A	BL	BL	BL	N/A	BL	BL	BL	BL
Di-2-ethylhexyl phthalate(DEHP)	BL	N/A	BL	BL	BL	N/A	BL	BL	BL	BL
Diisobutyl phthalate(DIBP)	BL	N/A	BL	BL	BL	N/A	BL	BL	BL	BL

Tested Item(s)	Screening Result									
	51	52	53	54	55	56	57	58	59	60
Lead (Pb)	BL	BL	BL	BL	BL	BL	OL <sup>②</sup>	BL	BL	BL
Cadmium (Cd)	BL	BL	BL	BL	BL	BL	BL	BL	BL	BL
Mercury (Hg)	BL	BL	BL	BL	BL	BL	BL	BL	BL	BL
Total Chromium (Cr(VI))	BL	BL	BL	BL	BL	BL	BL	BL	BL	BL
Total Bromine (PBBs & PBDEs)	N/A	BL	N/A	BL	BL	BL*	BL	BL	BL*	BL*
Dibutyl phthalate(DBP)	N/A	BL	N/A	BL	BL	BL	BL	BL	BL	BL
Benzylbutyl phthalate(BBP)	N/A	BL	N/A	BL	BL	BL	BL	BL	BL	BL
Di-2-ethylhexyl phthalate(DEHP)	N/A	BL	N/A	BL	BL	BL	BL	BL	BL	BL
Diisobutyl phthalate(DIBP)	N/A	BL	N/A	BL	BL	BL	BL	BL	BL	BL

Shenzhen Alpha Product Testing Co., Ltd.

Building i, No.2, Lixin Road, Fuyong Street, Bao'an District, 518103, Shenzhen, Guangdong, China

# TEST REPORT



Report No.: A2104287-C01-R06

Date: September 08, 2021

Page 8 of 18

## (1) Screening Result

Tested Item(s)	Screening Result									
	61	62	63	64	65	66	67	68	69	70
Lead (Pb)	BL	BL	BL	BL	BL	BL	BL	BL	BL	BL
Cadmium (Cd)	BL	BL	BL	BL	BL	BL	BL	BL	BL	BL
Mercury (Hg)	BL	BL	BL	BL	BL	BL	BL	BL	BL	BL
Total Chromium (Cr(VI))	BL	BL	BL	BL	BL	BL	BL	BL	BL	BL
Total Bromine (PBBs & PBDEs)	BL	BL	N/A	BL*	BL	BL	BL	N/A	BL*	BL*
Dibutyl phthalate(DBP)	BL	BL	N/A	BL	BL	BL	BL	N/A	BL	BL
Benzylbutyl phthalate(BBP)	BL	BL	N/A	BL	BL	BL	BL	N/A	BL	BL
Di-2-ethylhexyl phthalate(DEHP)	BL	BL	N/A	BL	BL	BL	BL	N/A	BL	BL
Diisobutyl phthalate(DIBP)	BL	BL	N/A	BL	BL	BL	BL	N/A	BL	BL

Tested Item(s)	Screening Result									
	71	72#	73	74	75	76	77	78	79	80
Lead (Pb)	BL	BL	BL	BL	BL	BL	BL	BL	BL	BL
Cadmium (Cd)	BL	BL	BL	BL	BL	BL	BL	BL	BL	BL
Mercury (Hg)	BL	BL	BL	BL	BL	BL	BL	BL	BL	BL
Total Chromium (Cr(VI))	BL	BL	BL	BL	X	BL	BL	BL	BL	BL
Total Bromine (PBBs & PBDEs)	N/A	BL	BL	N/A	N/A	N/A	BL	N/A	IN	BL
Dibutyl phthalate(DBP)	N/A	BL	BL	N/A	N/A	N/A	BL	N/A	BL	BL
Benzylbutyl phthalate(BBP)	N/A	BL	BL	N/A	N/A	N/A	BL	N/A	BL	BL
Di-2-ethylhexyl phthalate(DEHP)	N/A	BL	BL	N/A	N/A	N/A	BL	N/A	BL	BL
Diisobutyl phthalate(DIBP)	N/A	BL	BL	N/A	N/A	N/A	BL	N/A	BL	BL

Tested Item(s)	Screening Result									
	81#	82	83	84	85	86	87	88	89	90
Lead (Pb)	BL	BL	BL	BL	BL	BL	BL	BL	BL	BL
Cadmium (Cd)	BL	BL	BL	BL	BL	BL	BL	BL	BL	BL
Mercury (Hg)	BL	BL	BL	BL	BL	BL	BL	BL	BL	BL
Total Chromium (Cr(VI))	BL	BL	BL	BL	BL	BL	BL	BL	BL	BL
Total Bromine (PBBs & PBDEs)	BL	N/A	BL*	BL	BL	BL	BL	BL	BL	BL
Dibutyl phthalate(DBP)	BL	N/A	BL	BL	BL	BL	BL	BL	BL	BL
Benzylbutyl phthalate(BBP)	BL	N/A	BL	BL	BL	BL	BL	BL	BL	BL
Di-2-ethylhexyl phthalate(DEHP)	BL	N/A	BL	BL	BL	BL	BL	BL	BL	BL
Diisobutyl phthalate(DIBP)	BL	N/A	BL	BL	BL	BL	BL	BL	BL	BL

Shenzhen Alpha Product Testing Co., Ltd.

Building i, No.2, Lixin Road, Fuyong Street, Bao'an District, 518103, Shenzhen, Guangdong, China



# TEST REPORT



Report No.: A2104287-C01-R06

Date: September 08, 2021

Page 9 of 18

## (1) Screening Result

Tested Item(s)	Screening Result									
	91	92	93	94	95	96	97	98	99	100
Lead (Pb)	BL	BL	BL	BL	BL	BL	BL	BL	BL	BL
Cadmium (Cd)	BL	BL	BL	BL	BL	BL	BL	BL	BL	BL
Mercury (Hg)	BL	BL	BL	BL	BL	BL	BL	BL	BL	BL
Total Chromium (Cr(VI))	BL	BL	BL	BL	BL	BL	BL	BL	BL	BL
Total Bromine (PBBs & PBDEs)	N/A	N/A	BL	N/A	BL*	N/A	BL	BL*	N/A	N/A
Dibutyl phthalate(DBP)	N/A	N/A	BL	N/A	BL	N/A	BL	BL	N/A	N/A
Benzylbutyl phthalate(BBP)	N/A	N/A	BL	N/A	BL	N/A	BL	BL	N/A	N/A
Di-2-ethylhexyl phthalate(DEHP)	N/A	N/A	BL	N/A	BL	N/A	BL	BL	N/A	N/A
Diisobutyl phthalate(DIBP)	N/A	N/A	BL	N/A	BL	N/A	BL	BL	N/A	N/A

Tested Item(s)	Screening Result									
	101	102	103	104	105	106	107	108	109	110
Lead (Pb)	BL	BL	BL	BL	BL	BL	BL	BL	BL	BL
Cadmium (Cd)	BL	BL	BL	BL	BL	BL	BL	BL	BL	BL
Mercury (Hg)	BL	BL	BL	BL	BL	BL	BL	BL	BL	BL
Total Chromium (Cr(VI))	BL	BL	BL	BL	BL	BL	X	BL	BL	BL
Total Bromine (PBBs & PBDEs)	N/A	BL	N/A	N/A	N/A	N/A	BL	BL	BL	N/A
Dibutyl phthalate(DBP)	N/A	BL	N/A	N/A	N/A	N/A	BL	BL	BL	N/A
Benzylbutyl phthalate(BBP)	N/A	BL	N/A	N/A	N/A	N/A	BL	BL	BL	N/A
Di-2-ethylhexyl phthalate(DEHP)	N/A	BL	N/A	N/A	N/A	N/A	BL	BL	BL	N/A
Diisobutyl phthalate(DIBP)	N/A	BL	N/A	N/A	N/A	N/A	BL	BL	BL	N/A

Tested Item(s)	Screening Result									
	111	112	113	114	115	116	117	118	119	120
Lead (Pb)	BL	BL	BL	BL	BL	BL	BL	BL	BL	BL
Cadmium (Cd)	BL	BL	BL	BL	BL	BL	BL	BL	BL	BL
Mercury (Hg)	BL	BL	BL	BL	BL	BL	BL	BL	BL	BL
Total Chromium (Cr(VI))	BL	BL	BL	BL	BL	BL	BL	BL	BL	BL
Total Bromine (PBBs & PBDEs)	N/A	N/A	N/A	BL	N/A	BL	BL	BL	BL	N/A
Dibutyl phthalate(DBP)	N/A	N/A	N/A	BL	N/A	BL	BL	BL	BL	N/A
Benzylbutyl phthalate(BBP)	N/A	N/A	N/A	BL	N/A	BL	BL	BL	BL	N/A
Di-2-ethylhexyl phthalate(DEHP)	N/A	N/A	N/A	BL	N/A	BL	BL	BL	BL	N/A
Diisobutyl phthalate(DIBP)	N/A	N/A	N/A	BL	N/A	BL	BL	BL	BL	N/A

Shenzhen Alpha Product Testing Co., Ltd.

Building i, No.2, Lixin Road, Fuyong Street, Bao'an District, 518103, Shenzhen, Guangdong, China

# TEST REPORT



Report No.: A2104287-C01-R06

Date: September 08, 2021

Page 10 of 18

## (1) Screening Result

Tested Item(s)	Screening Result									
	121	122	123	124	125	126	127	128	129	130
Lead (Pb)	BL	BL	BL	BL	BL	BL	BL	BL	BL	BL
Cadmium (Cd)	BL	BL	BL	BL	BL	BL	BL	BL	BL	BL
Mercury (Hg)	BL	BL	BL	BL	BL	BL	BL	BL	BL	BL
Total Chromium (Cr(VI))	BL	BL	BL	BL	BL	BL	X	X	BL	BL
Total Bromine (PBBs & PBDEs)	BL	N/A	N/A	N/A	N/A	N/A	N/A	N/A	N/A	BL
Dibutyl phthalate(DBP)	BL	N/A	N/A	N/A	N/A	N/A	N/A	N/A	N/A	BL
Benzylbutyl phthalate(BBP)	BL	N/A	N/A	N/A	N/A	N/A	N/A	N/A	N/A	BL
Di-2-ethylhexyl phthalate(DEHP)	BL	N/A	N/A	N/A	N/A	N/A	N/A	N/A	N/A	BL
Diisobutyl phthalate(DIBP)	BL	N/A	N/A	N/A	N/A	N/A	N/A	N/A	N/A	BL

Tested Item(s)	Screening Result									
	131	132	133	134	135	136	137	138	139	140
Lead (Pb)	BL	BL	OL*	BL	BL	BL	BL	BL	BL	BL
Cadmium (Cd)	BL	BL	BL	BL	BL	BL	BL	BL	BL	BL
Mercury (Hg)	BL	BL	BL	BL	BL	BL	BL	BL	BL	BL
Total Chromium (Cr(VI))	BL	BL	BL	BL	BL	X	BL	BL	BL	BL
Total Bromine (PBBs & PBDEs)	BL*	BL	N/A	N/A	BL	N/A	BL	BL*	N/A	BL*
Dibutyl phthalate(DBP)	BL	BL	N/A	N/A	BL	N/A	BL	BL	N/A	BL
Benzylbutyl phthalate(BBP)	BL	BL	N/A	N/A	BL	N/A	BL	BL	N/A	BL
Di-2-ethylhexyl phthalate(DEHP)	BL	BL	N/A	N/A	BL	N/A	BL	BL	N/A	BL
Diisobutyl phthalate(DIBP)	BL	BL	N/A	N/A	BL	N/A	BL	BL	N/A	BL

Tested Item(s)	Screening Result									
	141	142	143	144	145	146	147	148	149	
Lead (Pb)	BL	BL	BL	BL	BL	BL	BL	BL	BL	
Cadmium (Cd)	BL	BL	BL	BL	BL	BL	BL	BL	BL	
Mercury (Hg)	BL	BL	BL	BL	BL	BL	BL	BL	BL	
Total Chromium (Cr(VI))	BL	BL	BL	BL	BL	BL	BL	BL	BL	
Total Bromine (PBBs & PBDEs)	BL*	N/A	BL*	BL	BL	N/A	BL	BL*	N/A	
Dibutyl phthalate(DBP)	BL	N/A	BL	BL	BL	N/A	BL	BL	N/A	
Benzylbutyl phthalate(BBP)	BL	N/A	BL	BL	BL	N/A	BL	BL	N/A	
Di-2-ethylhexyl phthalate(DEHP)	BL	N/A	BL	BL	BL	N/A	BL	BL	N/A	
Diisobutyl phthalate(DIBP)	BL	N/A	BL	BL	BL	N/A	BL	BL	N/A	

Shenzhen Alpha Product Testing Co., Ltd.

Building i, No.2, Lixin Road, Fuyong Street, Bao'an District, 518103, Shenzhen, Guangdong, China

# TEST REPORT



Report No.: A2104287-C01-R06

Date: September 08, 2021

Page 11 of 18

## (2) Test result for Chemical Confirmation

(a) The test result of Lead(Pb):

Testing item	Result (mg/kg)
	133
Lead(Pb):	24710<1>

(b) The test result of Hexavalent Chromium (Cr(VI)):

Testing item	Result (mg/kg)					
	19	75	107	127	128	136
Hexavalent Chromium (Cr(VI))	N.D	N.D	N.D	N.D	N.D	N.D

(c) The test result of PBBs, PBDEs :

Testing item	Result (mg/kg)
	79
Sum of polybrominated biphenyls (PBBs)	N.D
Sum of polybrominated diphenyl ethers(PBDEs)	Nonabromodiphenyl ether (NonaBDE):10 Decabromodiphenyl ether (DecaBDE):728 Sum of PBDEs:738

**Remark:** N.D = Not Detected (< MDL or LOQ), MDL = Method Detection Limit  
IN= Inconclusive, Further chemical test, X = The range of needing to do further testing  
BL = Below the screening limit, OL = Over the screening limit.  
N/A= Not applicable  
3σ= The reproducibility of analytical instruments  
\* = The screened result was found and further chemical test  
When conducting the test for PBBs&PBDEs, XRF was introduced to screen Br exclusively, and then chemical screening was conducted if the XRF result is X.  
When conducting the test for Hexavalent Chromium, XRF was introduced to screen Chromium exclusively.  
LOQ = Limit of Quantification, The LOQ of Hexavalent chromium is 0.10 µg/cm<sup>2</sup>  
LOD= Detection limit  
mg/kg = ppm = parts per million, 1000 mg/kg = 0.1%  
#: Resubmitted date: September 01, 2021  
<1>: According to the declaration from the client, Lead (Pb) in the sample is exempted by EU RoHS Directive 2011/65/EU based on 6(c): Copper alloy containing up to 4% (40000mg/kg) lead by weight  
<2>: According to the declaration from the client, Lead (Pb) in the sample is exempted by EU RoHS Directive 2011/65/EU based on 7(c) "Electrical and electronic components containing lead in a glass or ceramic other than dielectric ceramic in capacitors, e.g. piezoelectronic devices, or in a glass or ceramic matrix compound".

Shenzhen Alpha Product Testing Co., Ltd.

Building i, No.2, Lixin Road, Fuyong Street, Bao'an District, 518103, Shenzhen, Guangdong, China



# TEST REPORT

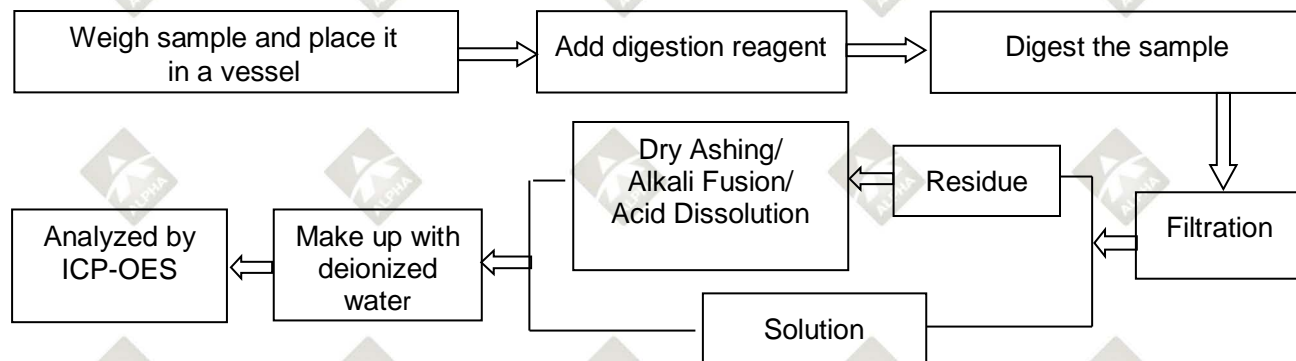
Report No.: A2104287-C01-R06

Date: September 08, 2021

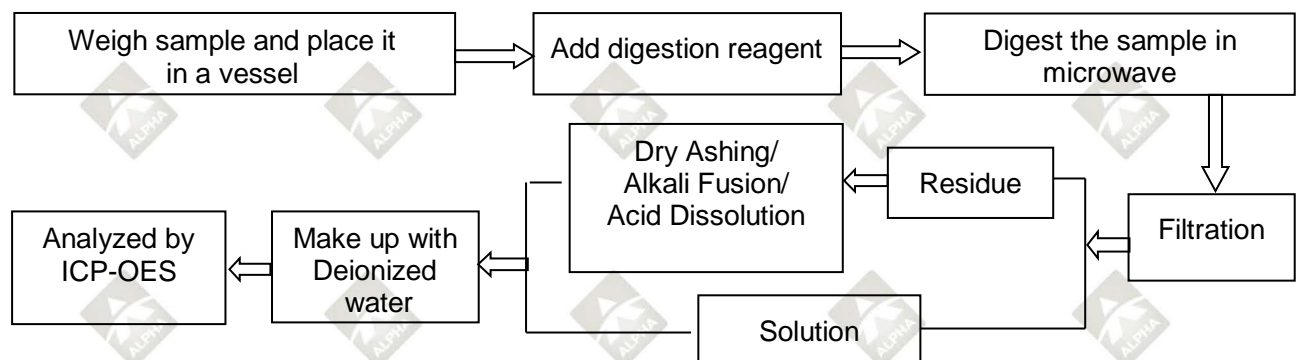
Page 12 of 18

## Test Process

### 1. Lead(Pb), Cadmium(Cd), Chromium(Cr)

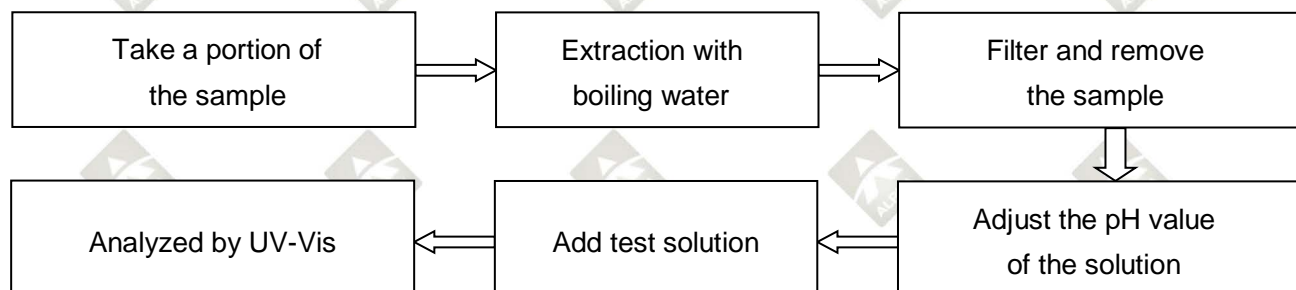


### 2. Mercury(Hg)



### 3. Hexavalent Chromium (Cr (VI))

#### (1) IEC 62321-7-1:2015 Plating/Metal sample(s)





# TEST REPORT

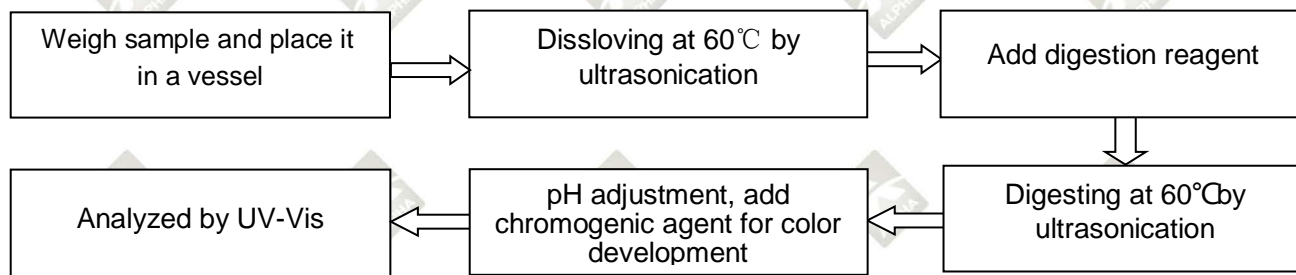
Report No.: A2104287-C01-R06

Date: September 08, 2021

Page 13 of 18

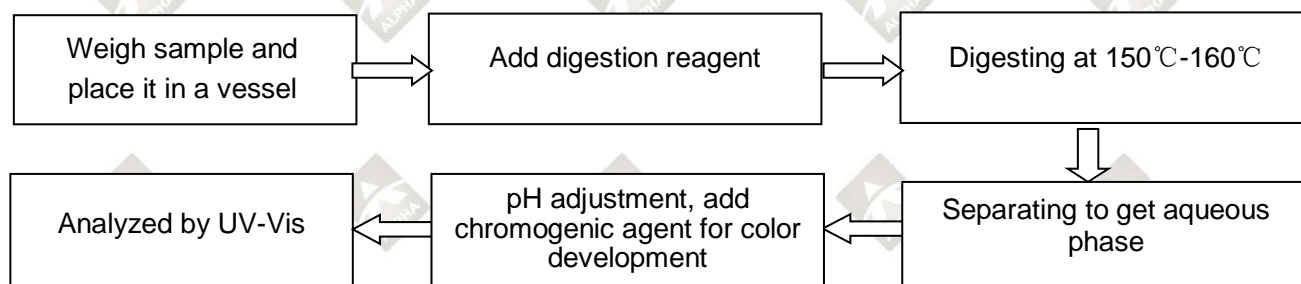
## (2) IEC 62321-7-2:2017

### Non-metal sample(s) (Material ABS/PC/PVC)

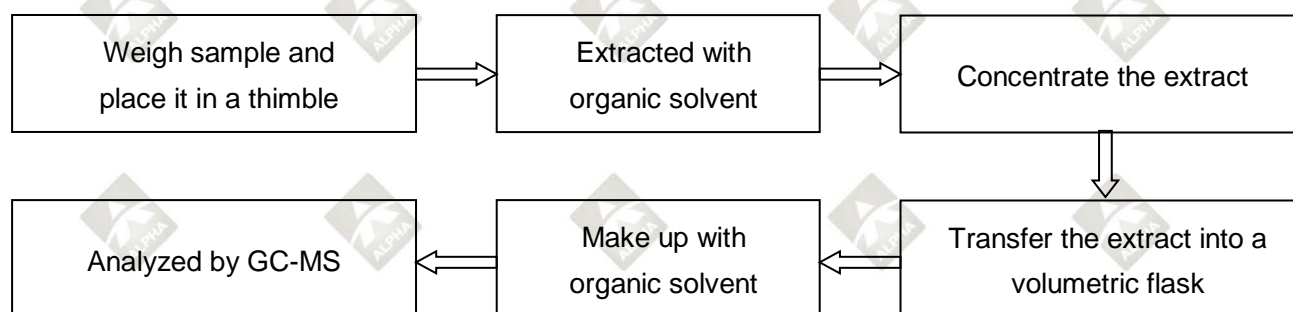


## (3) IEC 62321-7-2:2017

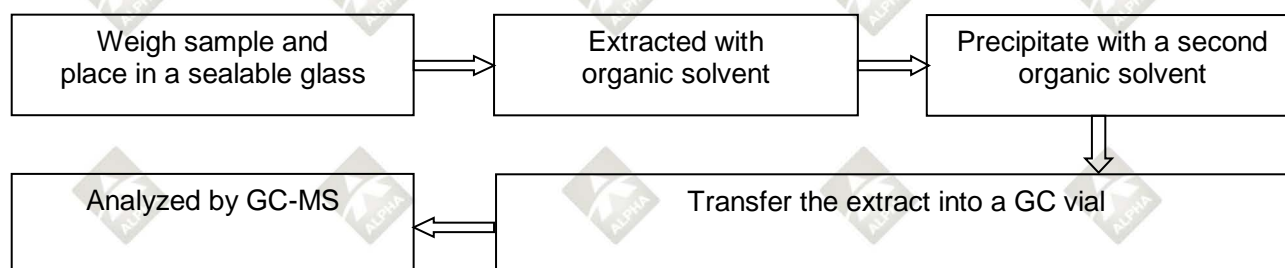
### Non-metal sample(s) (Others)



## 4. Polybrominated Biphenyls (PBBs), Polybrominated Diphenyl Ethers (PBDEs)



## 5. Phthalates(DBP/BBP/DEHP/DIBP)



# TEST REPORT

Report No.: A2104287-C01-R06

Date: September 08, 2021

Page 14 of 18

## Tested sample photo(s)



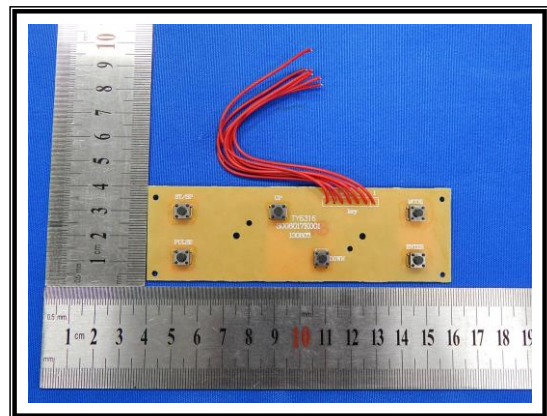
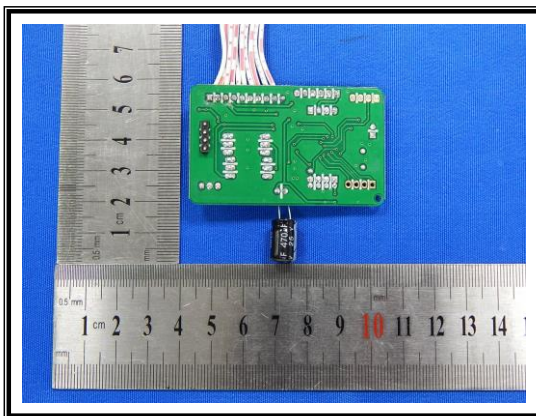
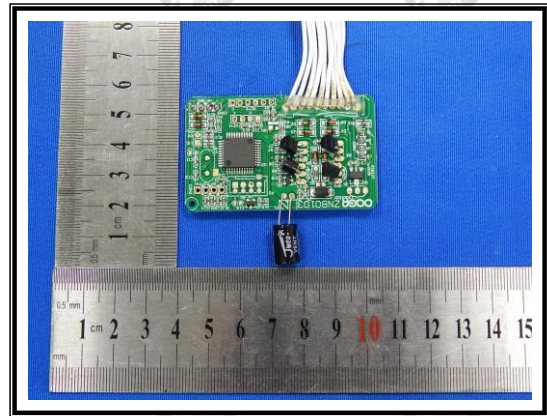
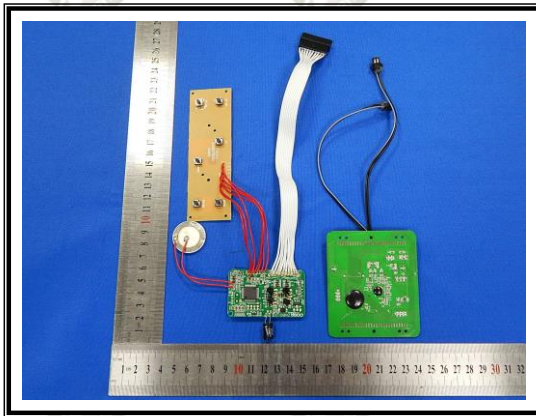
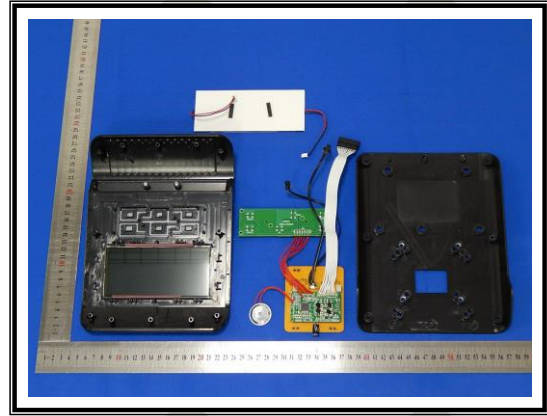
# TEST REPORT

Report No.: A2104287-C01-R06

Date: September 08, 2021

Page 15 of 18

## Tested sample photo(s)



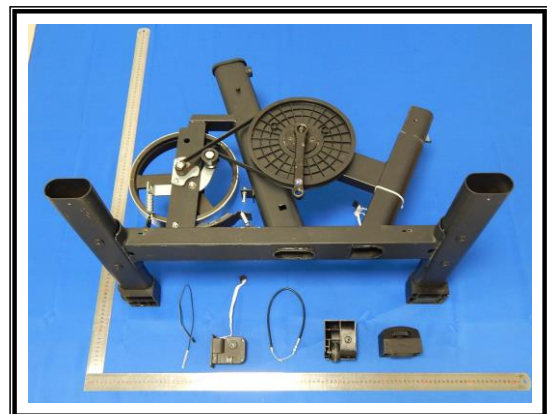
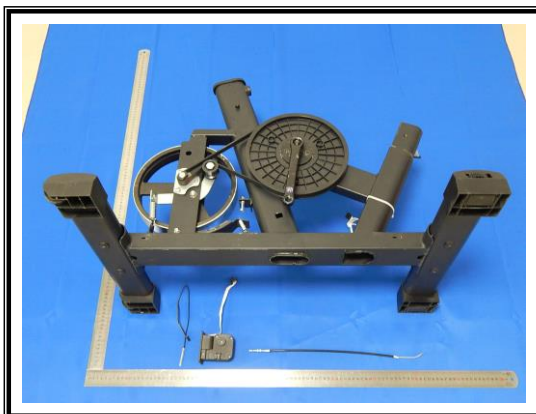
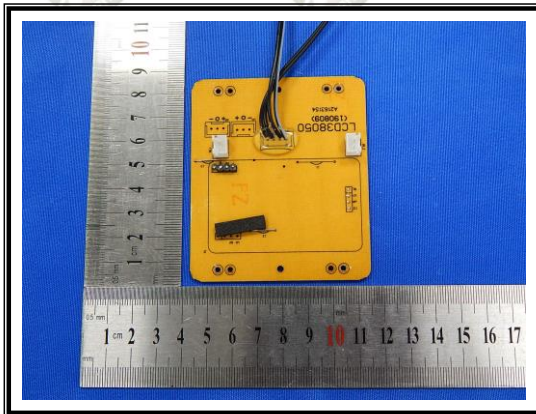
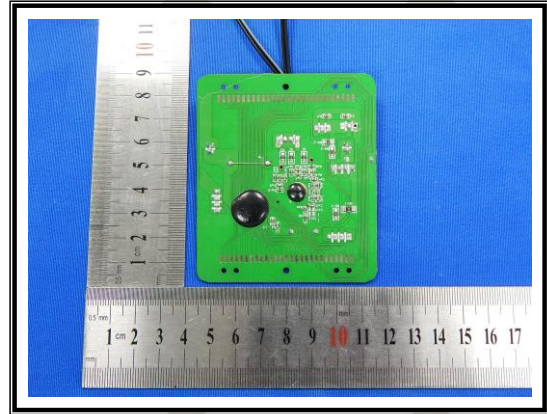
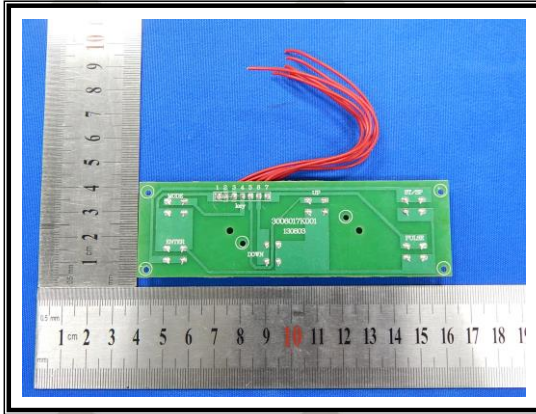
# TEST REPORT

Report No.: A2104287-C01-R06

Date: September 08, 2021

Page 16 of 18

## Tested sample photo(s)





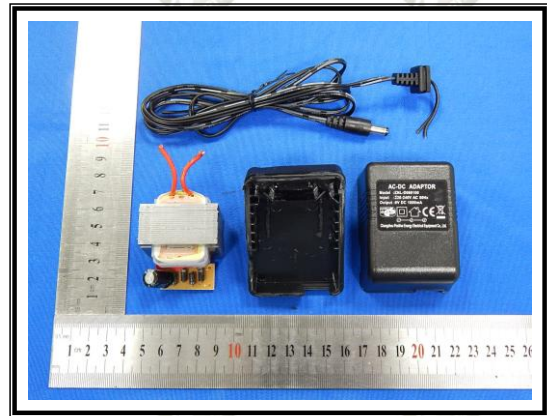
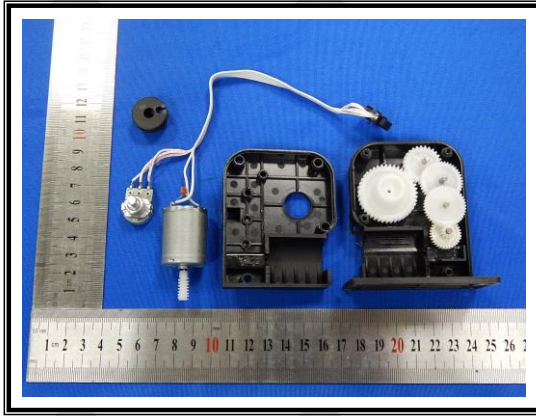
# TEST REPORT

Report No.: A2104287-C01-R06

Date: September 08, 2021

Page 17 of 18

## Tested sample photo(s)



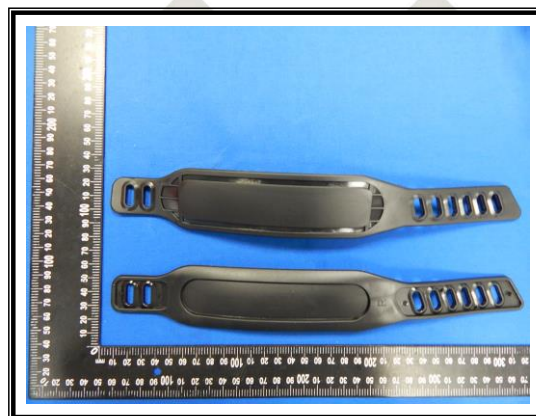
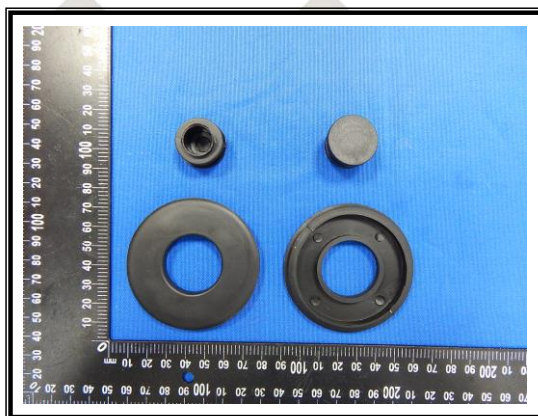
# TEST REPORT

Report No.: A2104287-C01-R06

Date: September 08, 2021

Page 18 of 18

## Tested sample photo(s)



--- End of report ---

### Statement:

1. The sample(s) and sample Information was/were provided by the client who should be responsible for the authenticity which ALPHA hasn't verified.
2. The result(s) shown in this report refer(s) only to the sample(s) tested.
3. According to the applicant's requirement, we only test the specified material of submit sample(s).
4. Without written approval of ALPHA, this report can't be reproduced except in full.